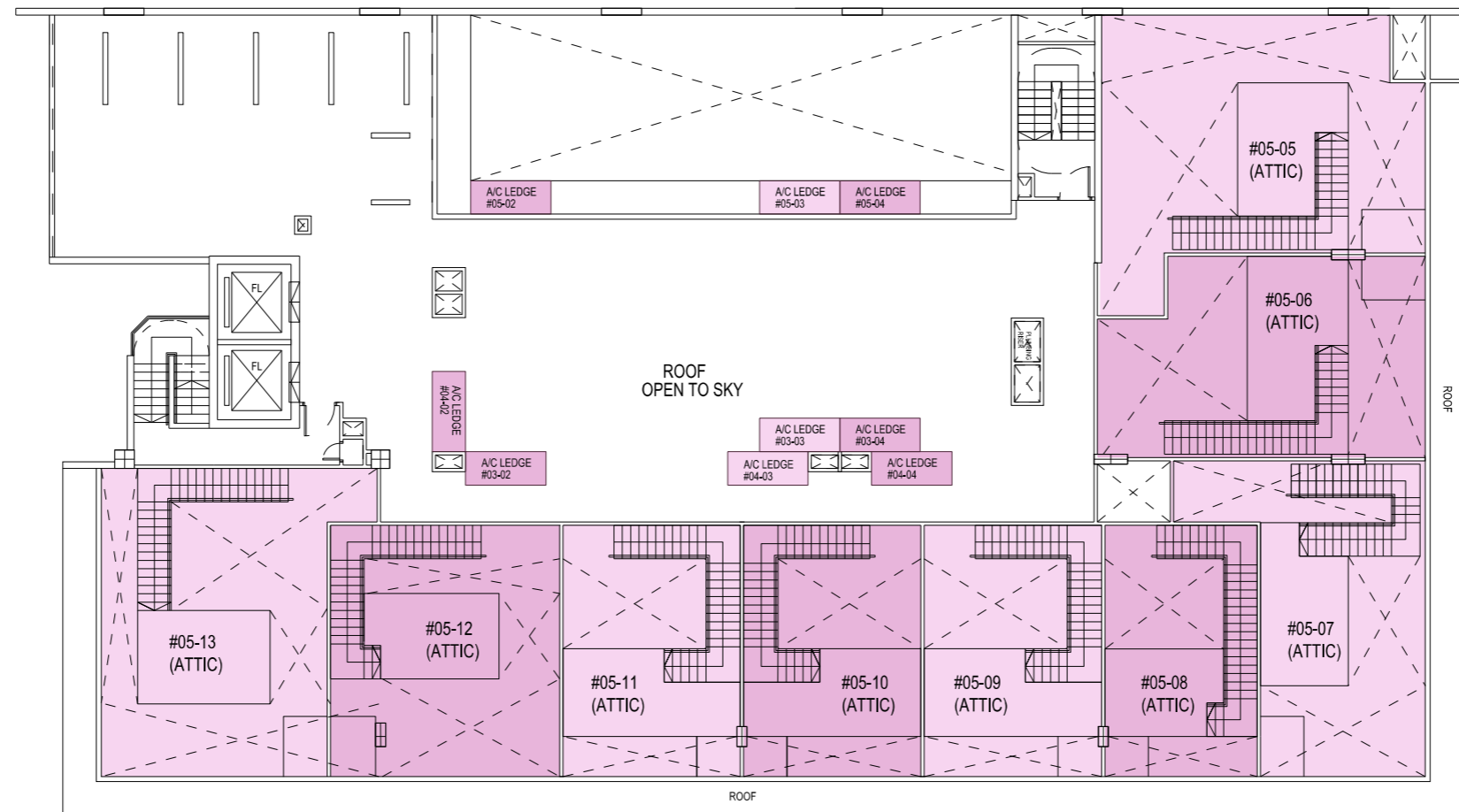


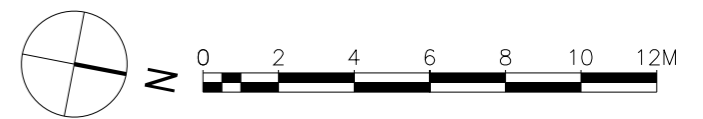
OFFICES

UNIT	#05-01	#05-02	#05-03	#05-04	#05-05	#05-06	#05-07	#05-08	#05-09	#05-10	#05-11	#05-12	#05-13
5TH STOREY AREA	807 FT <sup>2</sup>	467 FT <sup>2</sup>	489 FT <sup>2</sup>	456 FT <sup>2</sup>	1049 FT <sup>2</sup>	905 FT <sup>2</sup>	872 FT <sup>2</sup>	620 FT <sup>2</sup>	710 FT <sup>2</sup>	737 FT <sup>2</sup>	737 FT <sup>2</sup>	856 FT <sup>2</sup>	1020 FT <sup>2</sup>



# ATTIC FLOOR PLAN

CONCEPT STAGE



PROPOSED REDEVELOPMENT INTO A 5-STOREY COMMERCIAL BUILDING COMPRISING SHOPS AT THE BASEMENT, 1ST AND 2ND STOREYS, RESTAURANTS AT THE 1ST STOREY AND OFFICES AT THE 3RD TO 5TH STOREY WITH ATTIC AND BASEMENT CAR PARKS ON LOT 08514V MK26 AT 160 CHANGI ROAD (GEYLANG PLANNING AREA)